

INSTALLATION CHEAT SHEET

For GBT Machine AIRFLOW® Prophylaxis Master



Please read the GBT Machine AIRFLOW® Prophylaxis Master IFU carefully prior to use. This document does not replace this IFU. Please access the GBT Machine AIRFLOW® Prophylaxis Master and GBT Machine Station IFUs by using the following QR codes:

GBT Machine AIRFLOW® Prophylaxis Master IFU : FB-1022 GBT Machine Station IFU : FB-1024



EMS 
MAKE ME SMILE.

Installation Requirements

GBT Machine AIRFLOW®
Prophylaxis Master
FT-300

AIRFLOW® Device

Station DW-100



Key:  Air  Water  Power

CONNECTORS

Equipment included with the purchase of your GBT Machine AIRFLOW® Prophylaxis Master:

- Hose EH-142 for air (black/white), with quick coupling for the AIRFLOW® device
- Hose EG-110 for water (black/light blue + H2O sticker), with quick coupling for the AIRFLOW® device

⚠ Carefully connect the air and water hoses to avoid cross-connection. This can cause contamination, device malfunction, and health risks due to moisture and bacterial growth.



Water hose (EG-110)

Air hose (EH-142)

⚠ The use of cables and accessories other than those supplied by EMS may negatively affect EMC performance. Use only parts supplied by EMS. To be provided by the installing technician (please request that your technician supply this during installation): Quick connectors for the air/water plug (most common: 1/4" Poly Q.D. w/Shut-off, Male).



Example quick connector
(coupling counterpart chairside)

POWER SOURCE

- Voltage: 100-240 V.
- VAC Frequency: 50 to 60 Hz.
- Operating current: 4 A max.
- Class-I insulating system - requires protective earth (DO NOT INSTALL the device if your dental practice does NOT have protective earth). Plug the device only into an F1 protected mains supply. Check that the rated voltage of the device is suited for the local line voltage to prevent damaging the device, risk of fire or electric shock.
- As an option, order an adapter plug, if an IEC built-in socket is available.

COMPRESSED AIR SOURCE

Please make sure it is NON-REGULATED:

- Pressure: 4.5 to 7 bar. Ideally 6 bar – 80 psi (min 79 psi, max 101 psi)
- Flow rate: at least 20 NL/min
- Dry air max. humidity: 1,032 g/m3
- Filtration: max. 1 µm

1. Connect the air supply line to external device panel.
2. Measure with a manometer at this connection point.
3. Adjust the supply pressure if air pressure or flow rate is insufficient.
4. Connect the GBT Machine AIRFLOW® Prophylaxis Master.

WATER SOURCE

Filtered drinking water:

- Pressure: 2 to 5 bar – 30 to 72 psi
- Salinity: max. 0.2%
- Temperature: 10°C to 30°C – 50°F to 86°F

1. Connect the water hose EG-110 to the cabinet/dental unit.
2. To prevent retro contamination, connect the cable to an EN-1717 or DVGW compliant fluids source.

CONNECTIVITY¹

To connect the device :

1. Press simultaneously the GBT level and high level buttons and hold them for 2 seconds. A sonar sound will start playing and the Wi-Fi symbol will light up and fade several times, connection search is in progress.
2. Put your device (phone, computer, etc.) in airplane mode and ensure that only one user is connected to the device's WiFi at a time.
3. Connect to "GBTMACHINE-XXXX" Wi-Fi network with your phone.
4. Go on internet browser. Tap <http://192.168.1.1> in the search bar or scan the QR code. If the web page does not open, try another browser.
5. Choose your Wi-Fi network you want to connect your device to and enter your password. If successful, the WIFI logo & the LEDs on the machine will blink twice.



If connectivity is lost, the Wi-Fi logo on your GBT Machine AIRFLOW® Prophylaxis Master will turn orange.

If you enter your login credentials incorrectly during the 4th step of your device's connection process, the sonar sound will persist. Please turn your device off and on again, then restart the connection process from the first step.

To disconnect the device :

Do points 1, 2, 3 and 4 as described above.

- Then check the Disconnect Wi-Fi box and click on the Submit button.

IMPORTANT INFORMATION

BE AWARE THAT MOISTURE OR CONDENSATION CAN COMPROMISE THE INTEGRITY OF THE GBT MACHINE AND AFFECT THE WARRANTY.

If this occurs, promptly notify your dental dealer technician or the compressor manufacturer for maintenance².

DO NOT INSTALL THE PIEZON® OR NIGHT CLEANER BOTTLES BEFORE CONNECTING THE AIR AND WATER LINES.

- Please make sure the connectors for your air and water are different, so they cannot be switched (flooding your unit due to incorrect connectors is NOT covered by your EMS warranty).
- Ideally, the air/water connections and the power connection should be located in close proximity and at the base of the dental chair. Please ensure you comply with your country-specific guidelines and use a body protected circuit.
- If an existing water connection is present and not needed, please cover the connection.

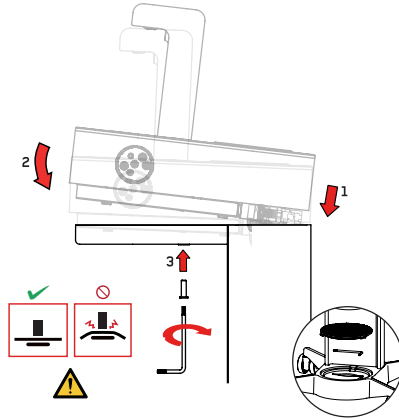
1. Please refer to the IFU FB-1022 for more information.

2. If you are concerned about such issues, please conduct a pre-site inspection for moisture at the compressor and connection sites before the Performance Checklist, and consult your dealer technician for additional filtration options, if necessary. Avoid using the unit until both the inspection and maintenance are completed.

3. Always make sure that the angled couplings EG-124 (water) & EH-145 (air) are correctly mounted in between the supply cords & the device back panel (refer to the procedure in the IFU FB-1024 GBT Machine Station).

GBT Machine Station³

Do not overtighten the screw; use the provided Allen key. Overtightening may make it difficult to plug in the AIRFLOW® and PIEZON® cord systems. If plugging in the cord systems is difficult, slightly untighten the screw.





HEADQUARTERS

CH

NYON, SWITZERLAND **E.M.S. ELECTRO MEDICAL SYSTEMS S.A.**

Chemin de la Vuarpillière 31
CH - 1260 Nyon
www.ems-dental.com/en/contact
www.ems-dental.com
T. +41 22 994 47 00
E-mail: welcome@ems-ch.com



WORLDWIDE EMS AFFILIATES

DE

MUNICH, GERMANY **EMS ELECTRO MEDICAL SYSTEMS GMBH**

Stahlgruberring 12
DE - 81829 München
T. +49 89 42 71 61 0
F. +49 89 42 71 61 60
E-mail: info@ems-ch.de

FR

FONCINE, FRANCE **EMS FRANCE SARL**

32, route de Pontarlier
FR - 39460 Foncine-le-Haut
T. +33 3 84 51 90 01
F. +33 3 84 51 94 00
E-mail: info@ems-france.fr

ES

MADRID, SPAIN **EMS ELECTRO MEDICAL SYSTEMS S.L.** **ESPAÑA SLU**

C/ Tomás Bretón, 50-52 2ª planta
ES - 28045 Madrid
T. +34 91 528 99 89
E-mail: info@ems-espana.com

PT

LISBON, PORTUGAL **EMSPOR - ELECTRO MEDICAL SYSTEMS** **PORTUGAL, UNIPESSOAL LDA**

Avenida Miguel Bombarda, 36, 6A
PT - 1050-165 Lisboa
T. +351 912 338 777
E-mail: info@ems-portugal.com

IT

MILANO, ITALY **EMS ITALIA S.R.L.**

Via Carlo Pisacane 7B
IT - 20016 Pero (MI)
T. +39 02 3453 8111
E-mail: info@ems-italia.it

UK

CAMBRIDGESHIRE, UNITED KINGDOM **EMS ELECTRO MEDICAL SYSTEMS UK** **LTD**

Ground Floor, Nelson House, Alington Road,
Little Barford
UK - St Neots, Cambridgeshire
PE19 6RE
T. +44 (0) 1480 587260
E-mail: info@ems-unitedkingdom.com

SE

STOCKHOLM, SWEDEN **EMS NORDIC AB**

Hammarby Fabriksväg 61
SE - 120 33 Stockholm
T. +46 8 899 102
E-mail: info@ems-nordic.se

If you have an issue during the installation or performance test, contact your local EMS aftersales team listed here.

PL

TYCHY, POLAND **EMS POLAND SP. Z O.O.**

Fabryczna 43
PL - 43-100 Tychy
T. +48 607 15 22 89
E-mail: info@ems-poland.com

GR

THESSALONIKI, GREECE **EMS EAST MEDITERANEAN M.I.K.E**

10 KM. Thessaloniki Thermi
GR - 57001 Thessaloniki
T. +30 231 231 61 30
E-mail: info-emsem@ems-ch.com

JO

AMMAN, JORDAN **EMS ELECTRO MEDICAL SYSTEMS JORDAN**

No.2 - second floor, 195 Arar (Wadi Saqra) str.
JO - Amman

US

SOUTHLAKE, TEXAS, UNITED STATES **OF AMERICA** **ELECTRO MEDICAL SYSTEMS L.L.C.**

2150E Continental Boulevard
Southlake, Texas, 76092, US
T. +1 972 690 8382
E-mail: custsvc@ems-na.com
Aftersales: emsrepairs@ems-na.com

AU

SYDNEY, AUSTRALIA **EMS OCEANIA PTY LTD**

The Woolstores - Suite 3, Shed 73
4E Huntley Street
AU - Alexandria, NSW 2015
T. +61 405 095 867
E-mail: info@ems-oceania.com

JP

TOKYO, JAPAN **E.M.S. JAPAN K.K.**

2F Takebashi Yasuda Building,
3-13 Kanda Nishiki-cho
JP - Chiyoda-ku, Tokyo, 101-0054
T. +81 (0) 3-6810-9351
F. +81 (0) 3-6810-9352
E-mail: emsjapan@ems-ch.com

CN

SHANGHAI, CHINA **医迈斯电子医疗系统贸易 (上海) 有限公司** **E.M.S. ELECTRO MEDICAL SYSTEMS TRADING** **(SHANGHAI) CO., LTD.**

Room 210, No. 1978, Jianshe Road, Jianshe Town
Chongming District,
CN - Shanghai 200120
T. +86 400 600 3518
E-mail: emschina@ems-ch.com

KR

SEOUL, SOUTH KOREA **EMS ELECTRO MEDICAL SYSTEMS KOREA LTD.**

3F, 8, Teheran-ro 98 Gil, Gangnam-Gu
T. +82 70 7807 2875
E-mail: emskorea@ems-ch.com